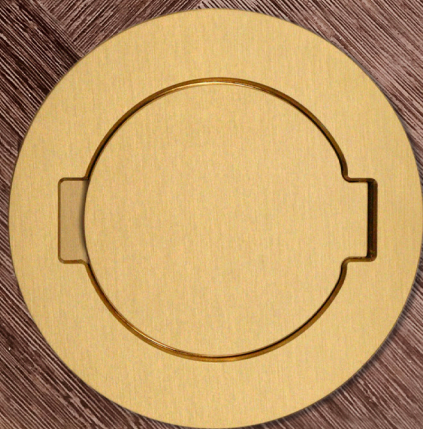


# ARPI

Floor Sockets by **Lithoss**



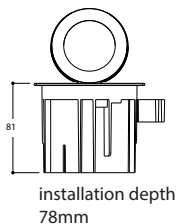
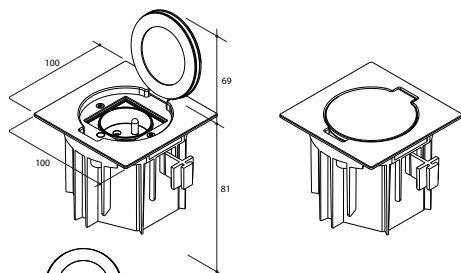
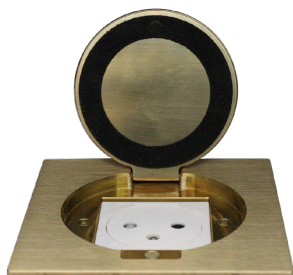
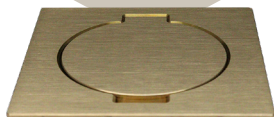
# TAIL

IP64



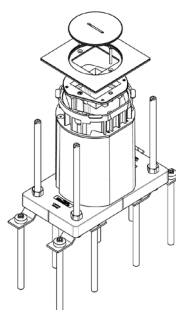
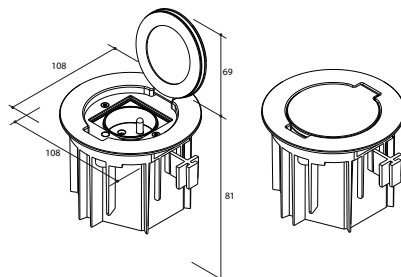
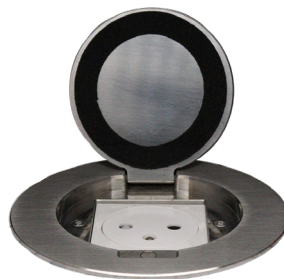
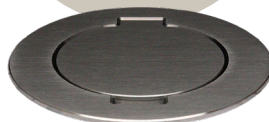
## ARPI TAIL SQUARE

adjust the first  
two numbers  
in the code  
->AR41



## ARPI TAIL ROUND

adjust the first  
two numbers  
in the code  
->AR42



- Installation box included.
- Installation box is different from IP64 / IP66 with screw lid.
- Installation in all types of floors.
- Compatible with the Arpi Level Support.

The different installation scenarios can be found on the Arpi Tail installation sheet.